

# Historian Fundamentals

## Instructor-led

### Topics

- Understand architecture communication between Historian Servers and Client nodes.
- Configure Historian using the Historian Administrator.
- Configure Data Collectors, including the Simulation collector, OPC collector, File collector and Windows Performance collector.
- Manage and configure data stores and archives.
- View collected data using the Excel Add-In Client.
- Configure the Historian OLE DB Provider.
- Design and build a security strategy.
- Use a variety of Historian utilities and Operating System administrative options to troubleshoot the system.

### Course description

The *Historian Fundamentals* course is designed to provide the student with a good working knowledge of the standard edition of Historian. Topics include administration focus for the server-based tasks as well as development focus for the client-based activities. The course provides lab time for building skills essential to developing and maintaining the Historian in a process environment.

### Who should attend?

This course is designed for process, automation, or instrumentation engineers and system integrators who will be developing, configuring, and using applications on a Historian system.

### Are there any pre-requisites?

Participants should have a working knowledge of Windows operating systems and Microsoft Excel.

### Part #

44A728312-345

### Delivery

Instructor-led, classroom, virtual or onsite

### Duration

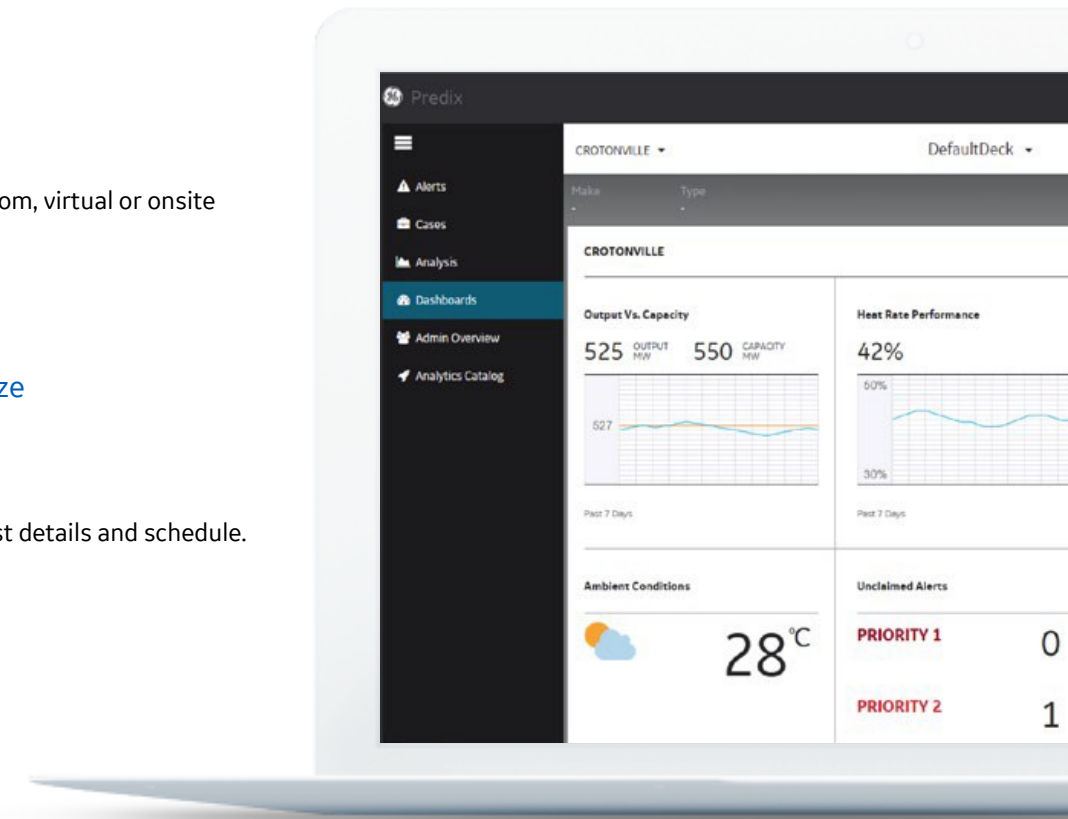
16 hours

### Suggested class size

10 Students

### Course Schedule

Click [here](#) for the latest details and schedule.





## Session 1

### Introduction to Historian

Study the basic features and architecture of Historian software.

### Architecture & Administration

Look at Historian components, architecture and the Historian Administrator.

### Data Stores & Archives

Configure and manage Historian Data Stores and Archives.

### Introduction to Collectors

Understand the available collectors and install collectors using the installer. Discuss collector redundancy.

## Session 2

### Tags

Explore tag configuration, sampling, compression and maintenance.

### OPC Collector

Explore the OPC Collector.

### File Collector

Configure xml or csv files for collection by Historian.

### Historian Clients

Understand the available clients, including Historian Analysis, OLE DB and the Excel Add-In.

## Session 3

### Historian Analysis Reports

Introduce Historian Analysis and the main client screen.

### Analysis Displays

Create Historian Analysis displays using the available tools.

### Historian Analysis Reports

Create Historian Analysis reports using the available reports.

### Historian Excel Add-in

Build reports to display Historian data using the Excel Add-In.

## Session 4

### Administration with the Excel Add-in

Administer Historian tags, data messages and alarms using the Excel Add-In.

### Historian OLE DB

Access Historian data using standard OLE DB applications, including the Historian Interactive SQL Client.

### Historian Security

Design and build a Historian security strategy.

### Historian Troubleshooting

Learn about the Windows Performance collector. Use Windows and Historian tools to troubleshoot the system.

# GE Digital Education Services

## Contact Information

GE Digital — Education Services

1 800 433 2682

Email: [training.ip@ge.com](mailto:training.ip@ge.com)

EDGE: [click here](#)

web: [click here](#)

## About GE

GE (NYSE: GE) is the world's Digital Industrial Company, transforming industry with software-defined machines and solutions that are connected, responsive and predictive.

GE is organized around a global exchange of knowledge, the "GE Store," through which each business shares and accesses the same technology, markets, structure and intellect. Each invention further fuels innovation and application across our industrial sectors. With people, services, technology and scale, GE delivers better outcomes for customers by speaking the language of industry.

## Contact Information

Americas: 1-855-YOUR1GE (1-855-968-7143)

[gedigital@ge.com](mailto:gedigital@ge.com)

[www.ge.com/digital](http://www.ge.com/digital)

## EDGE Learning Portal

EDGE is Education@GE.

It's our learning platform hosted on the web.

Around the world. Around the clock.

[Visit the EDGE](#)

[Browse our public catalog](#)

[Request an account today](#)