



Because Motion Matters™



invenysis



SENSORS, CONTROL, AND NETWORKING:

BANNER ENGINEERING

Sensors - Photoeyes, Lasers, Ultrasonics
Vision - Cameras, Lighting, Bar Code
Wireless - Process, Automation, Communications
Indicator Lights - Towers, Multi-color, Lights w/ Audible Alarms
Machine Safety - Light Screens, Safety Modules and Controllers.



TURCK

Proximity Sensors
Cylinder Sensors
Cordsets and Connectivity Products
Network Connectivity - DNet, ASI, Profibus, FF
Intrinsic Safe Amplifiers and Barriers
Process Flow, Temperature, Pressure Sensors
Process Connectivity and cabling.

EUROTHERM

Temperature Controllers, Power Controls, Process Control Systems.

GE - INTELLIGENT PLATFORMS

A wide range of open and scalable PLCs, motion controllers, PACs, I/O, operator interfaces and process solutions. RX3i, RX7i, Versamax, 90-70 and 90-30 processors as well as micro and nano solutions and HMI.



N-TRON

Industrial Network Switches, Wireless Access Points, POE, and Media Converters.

PYROMATION

Thermocouples, RTD's, Instrument and Thermocouple Extension Wire.

RED LION CONTROLS

HMI Products, Process Controls, Panel Meters, Sensors, Protocol Converters, KPI Displays.



PULS POWER SUPPLIES

DIN-rail switched-mode power supplies. Single and 3 Phase AC/DC, DC Converters, Redundant Power Supplies, AS-I and Buffer Modules from 25W to 960W.

TOPWORX

GO Leverless Limit Switches, Field Networking Solutions, and Valve Indication, and Wireless Position Monitors.

MOTION CONTROL SOLUTIONS:

KOLLMORGEN AND THOMSON

Superior Electric, Pacific Scientific, NEAT, G&L Motion, Micron, API, Warner, Thomson. Precision Motion Control, Servo, Stepper, Multi-Axis Control, Direct Drive, Gearboxes, Stages, Rails and Bearings, Frameless Motor.



TURCK

Linear Displacement Sensors, Draw Wire, Incremental Encoders, Slip Ring, and Absolute Encoders (multiturn and single turn), CANopen, PROFIBUS@-DP, SSI and BiSS.

GE - INTELLIGENT PLATFORMS

Tightly Integrated PLC based motion control for Servo and Stepper Systems.

DELTA TAU

The Leader in high performance, precision and flexible machine control. PMAC, PMAC-NC, and MACRO based motion control in PCI, VME, and PC104 formats.

GEAR REDUCERS

(Micron, Carson Mfg.) Planetary, Bevel and Hypoid, metric and Nema frame.

ENCODER PRODUCTS COMPANY

Incremental and Absolute rotary encoders. Cube, Round, Linear, and Thru-Bore with resolutions ranging from 1 ppr to 30,000 ppr.

LIN ENGINEERING

Stepper Motors, gearheads, and integrated motor technology

LINTECH

Screw and Belt Driven Customer Linear Stages, Rotary Tables, Round Rail and Pillow Blocks, Shafting, Rail and Linear Bearings.

QUICKSILVER CONTROLS

High-performance, Cost-effective Motion Control Products, Servo Controllers and Motors for use in the Original Equipment Manufacturer market.

VARIABLE FREQUENCY DRIVES

Parker SSD Drives (formerly Eurotherm), Delta Products, and Danfoss.

MACHINE SAFETY SOLUTIONS:

BANNER ENGINEERING

Safety Light Curtains, Interlocks, E-Stop Devices, Two Hand Control Modules, Fiber Optic Safety Systems, and Safety Controllers.

FORTRESS INTERLOCKS

Robust Trapped-Key Interlocks, Safety Gate Switches and Machine Control Centers.

LARCO

Safety Mats, Edge Guards, and Safety Control Units. Industrial safety mat systems offer unparalleled durability and versatility for machine safeguarding.



Technical Marketing Mfg., Inc.

COLORADO OFFICE:

5000 Robb St., Bldg. 3, Ste. A
Wheat Ridge, CO 80033
P 303.232.1516
F 303.232.7844

ARIZONA OFFICE:

140 S. Lindon Lane, Ste. 102
Tempe, AZ 85281
P 480.347.1185
F 480.443.0180

NEW MEXICO OFFICE:

2601 Wyoming NE, #212
Albuquerque, NM 87112
P 505.298.6893
F 505.271.1972

UTAH OFFICE

5248 S. Pinemont Dr., Ste. C209
Murray, UT 84123
P 801.268.3216
F 801.288.2601

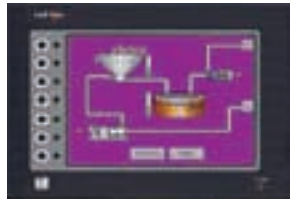
E-Mail: email@tmmi.com
Website: www.tmmi.com



HMI & INDUSTRIAL PC:

RED LION CONTROLS

G3 operator interface panels for PLCs, motor drives and other communications-capable devices. Ethernet standard on all G3 models, Message Centers, Slave Displays, Large Digit Displays and Protocol Converters.



GE - INTELLIGENT PLATFORMS

Quick Panel View and Control, Windows CE Based Touch Screen Interfaces, and Embedded XP with iFix.

GE - COMPUTER DYNAMICS

Flat Panel Computers and Solutions for any Environment including Ruggedized, Hazardous, and Military.

ARISTA

Industrial Thin Client Hardware and Industrial PC's.

DYNICS (ANN ARBOR TECHNOLOGIES)

Industrial PCs, Large Touch Screens, Windows CE compatibility, Rack and Panel Mount, Thin Client Solutions.



STRATUS

Stratus servers deliver five nines (99.999%) and greater uptime.

SOFTWARE – FACTORY TO ENTERPRISE:

GE - INTELLIGENT PLATFORMS AUTOMATION SOFTWARE

Proficy data collection, visualization, and analysis capabilities giving you best-in-class HMI, SCADA, Batch and Change Management Solutions.

- iFix
- CIMPLICITY
- Change Management
- Batch Execution
- Embedded XP Solutions
- WebSpace
- iPower
- SCADA Historian

AUTO SOL

OPC Communication Servers for the Oil and Gas and Water/Wastewater Industries. Protocols for most RTU's with complete EFM Upload.

ACP THIN MANAGER

Complete Thin Client and Terminal Server Management Tool providing Auto Config of replacement clients, Redundancy and Failover, Server Load Balancing, and Enhanced Security.

GE – INTELLIGENT PLATFORMS OPERATIONS MANAGEMENT SOFTWARE

Bridges the gap between plant floor and business systems, combining proven Workflow, MES, EMI, and Quality & Compliance capabilities - while leveraging a Services Oriented Architecture (SOA).

Proficy:

- Workflow
- Real Time Information Portal
- Enterprise Historian
- Pulse
- Plant Applications
- Tracker
- Troubleshooter, Cause+, Process+
- Datamart
- SPC

CATAPULT SOFTWARE (iPower)

SCADA Software for the Electrical Power Industry built on iFix. Control Tagging, Bus Coloring, DNP3 Support, and iFix Accessory Tools.

SPECTER INSTRUMENTS

Win 911 and Mobile 911. World Leader in Remote Notification: Telephone, Smart Phone, pager, and email for automation applications.

SYTECH

XL Reporter, Web Director, Viewer, Mailer, Report Manager, and Database Blocks for iFix Software.



TRANSPARA

Visual KPI, mobile BI (business intelligence) software.

