

TMMi

Smart Industrial Automation Solutions
Sense it. Move it. Control it.



Industrial Interfaces

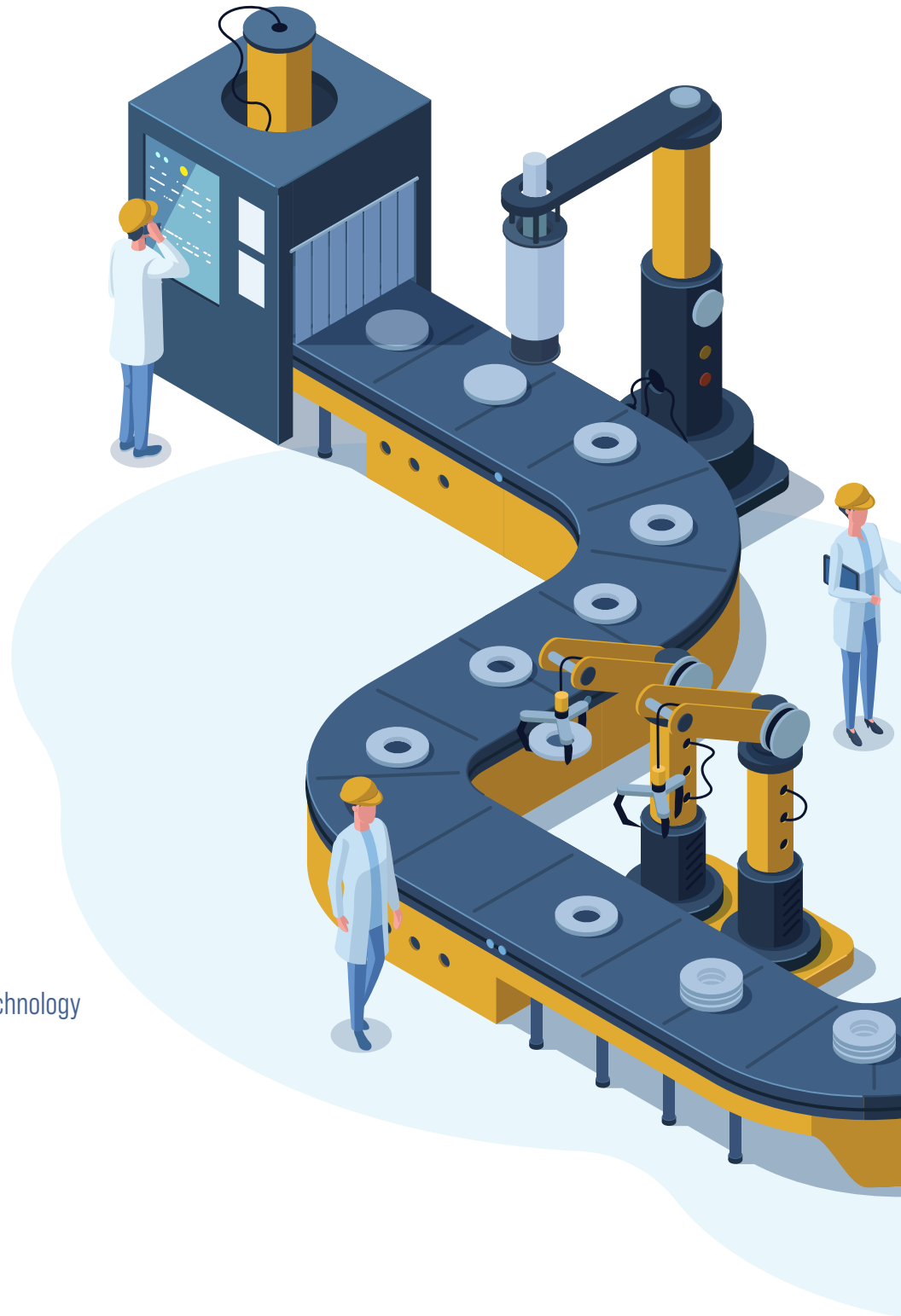
Edge Devices
Industrial Computers
Human Machine Interface (HMI)
Industrial Displays

Sensors

Position Sensors
Inductive, Capacitive,
Photo Optic, Laser
Pressure Sensors
Measurement Sensors
Laser, Radar, Ultrasonic
Temperature Sensors
Vibration Sensors
Humidity Sensors

Ethernet Solutions

Network Security for Operational Technology
Enterprise Wide Solutions
Endpoint Security
Unmanaged Switches
Managed Switches
Routers
Power over Ethernet (PoE)
On Machine Solutions



Connectivity

- Cordsets
- Custom Cordsets
- Receptacles
- Splitters
- Junction Boxes
- Field Wireable Connections
- Bulk Cable

Safety

- Safety Interlocks
- Safety Controllers
- Machine Controls and Permissions
- Fluid Power Safety
- Machine Guarding
- Intrinsic Safety

Industrial Control

- Edge Devices
- Remote Monitoring Solutions
- Industrial PLC Control
- Remote IO
- On Machine IO
- Safety Control
- Safety IO

Robotics

- Gantry Systems
- Robotic Arms
 - Integrated Vision
- Grippers
- Lifts
- Mounting

Motion Control

- Servo Motors and Drives
- Stepper Motors and Drives
- Variable Frequency Drives (VFD)
- Linear Actuation
- Motors with Integrated Controllers
- Encoders
- Gearboxes
- Ballscrews, Profile Rail, Bearings



About Us: Your Partner in Advanced Industrial Solutions

Established in 1977, TMMi, LLC has proudly evolved from a premier supplier of electrical control equipment to a leading provider of comprehensive industrial solutions in Colorado, Utah, Wyoming, Nevada, Arizona, New Mexico, Montana, and Idaho. With a legacy spanning nearly five decades, our commitment to providing cutting-edge solutions through trusted partnerships has solidified our position as a reliable partner for industrial solutions.

Innovative Solutions for a Dynamic Industry

TMMi, LLC stands as a trusted and accomplished partner, offering a comprehensive range of advanced solutions, including industrial controls, visualization, data analytics, robotics, motion control, smart sensing technologies, and safety solutions. Our expertise extends to providing technical solutions tailored to meet the unique challenges of modern industrial environments. Our journey has been marked by a dedication to building enduring relationships and providing complete technical solutions and support.

Driving Growth with Excellence

As we navigate the path of growth and transformation, our commitment to excellence remains unwavering. We continue to deliver exceptional solutions and forge lasting partnerships with clients and vendors, reflecting our steadfast dedication to industry leadership. Thank you for being part of our journey. We look forward to the future with enthusiasm and a commitment to delivering excellence in every endeavor.

